

47. Michael Warren (Contemporary) • *Countermovement* • Steel, unique, 19³/₄" x 15" x 5"

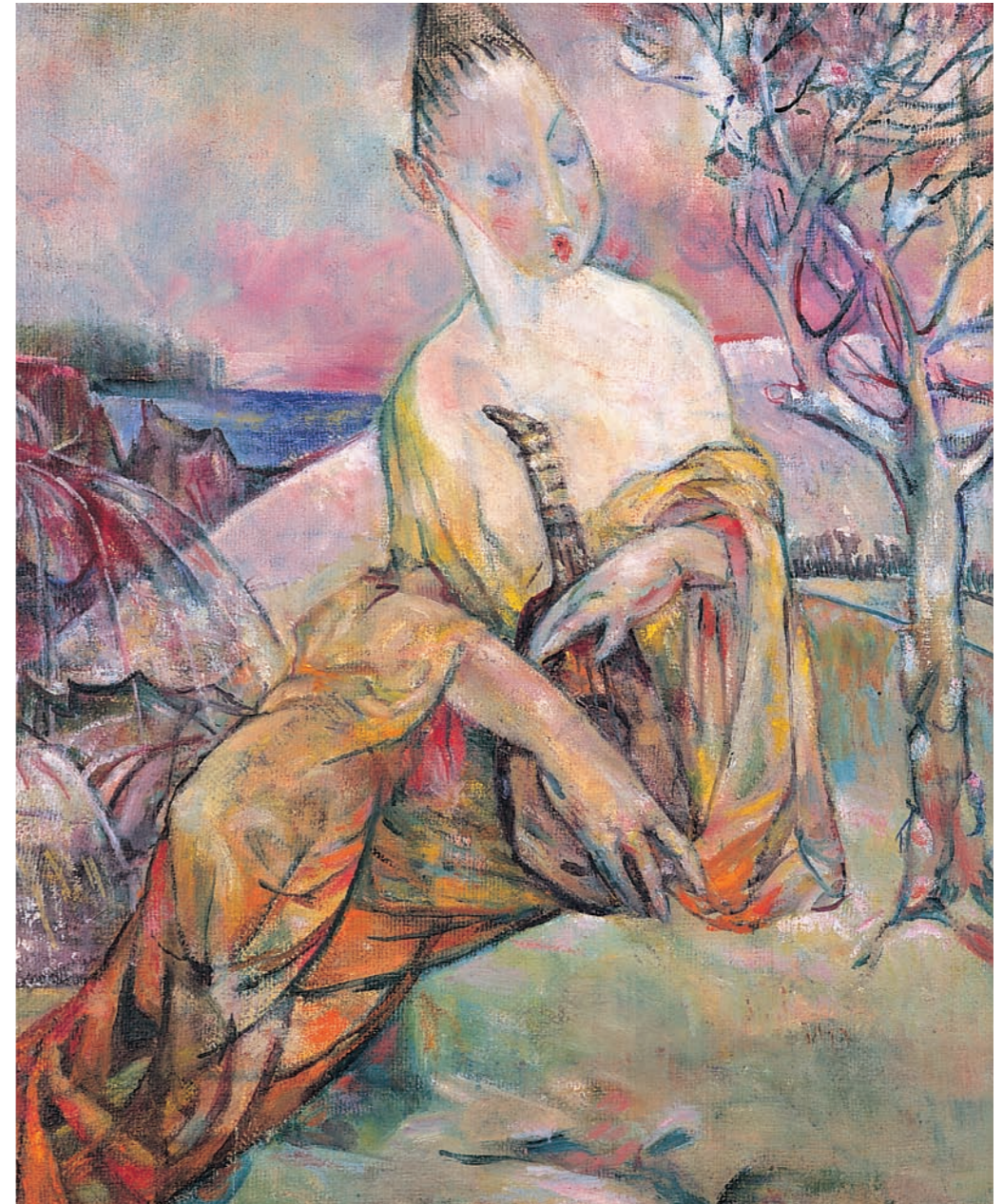
This piece is a maquette for the larger out-door version commissioned by Trinity College in 1985.

JORGENSEN FINE ART

29 Molesworth Street, Dublin 2.

Telephone 661 9758 & 661 9759 Fax 661 9760

E-mail: info@jorgensenfineart.com Website: www.jorgensenfineart.com



SUMMER EXHIBITION

FRONT COVER:

1. **Mary Swanzy, HRHA (1882–1974)**
The Lute Player
Oil on canvas, 17½" x 14"